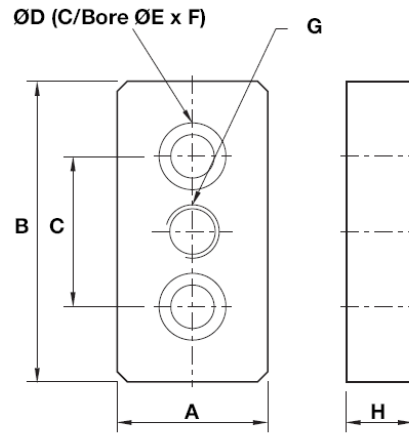


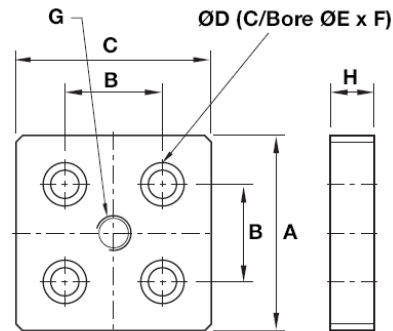
Foot Plates

Allows assembly of Foot on rectangular profiles, which have no central fixing hole.



Part No.	Recommended for	A	B	C	D	E	F	G	H	Mass kg
1-243-0114	20x40	20	40	20	5.5	9.5	5.4	M8	8	0.05
1-243-0115	30x60	30	60	30	9	14	8.6	M8	12	0.17
1-243-0116	40x80	40	80	40	13	20	13	M16	20	0.5
1-243-0112	45x90	45	90	45	13	20	13	M16	20	0.5

Allows assembly of Foot on square profiles, which have no central fixing hole.



Part No.	Recommended for	A	B	C	D	E	F	G	H	Mass kg
1-243-0117	80x80	80	40	80	14	20	13	M16	20	1.0
1-243-0113	90x90L	90	45	90	13	20	13	M16	20	1.0

Technical Data

	Rectangular Foot Profile	Square Foot Profile
Material	Steel EN32	Steel EN32
Finish	Black Oxide	Black Oxide