



Issue No. 2

Welcome back.....

Easy automation is an important focus for HepcoMotion® now. Our products are designed so that you can quickly and easily integrate them into your production process. In this edition of HepcoMotion® enews we introduce you to our latest belt driven linear motion system, the [PDU2M](#), a higher capacity version of our popular Profile Driven Unit. DualVee® [Washdown Wheels](#) are also brand new. The clever designers at Bishop Wisecarver have come up with a way of preventing fluids and debris from prematurely shortening bearing life. One manufacturer who trialled them extended replacement intervals six-fold! Read on for further information.

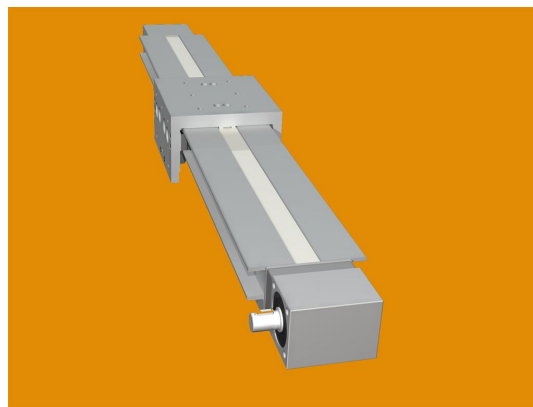
HepcoMotion® is [forty years old](#) this year. And whilst we celebrate our achievements in that time we also look ahead. Our new clean and modern [website](#) launches the next phase of our business as we continue to invest in design and production technology to bring more new and innovative products to market.



HIGH CAPACITY BELT DRIVEN SYSTEM

Let's start with some impressive statistics by comparing the new PDU2M with a standard PDU2.

- * 200% increase in moment load capacity
- * 1000% uplift in moment load stiffness
- * Direct load capacity is 50% greater



The PDU2M belt driven linear motion unit has been introduced to provide a higher performance, standard precision solution to fit into a compact space. It's ideal for multi-axis and more demanding single axis applications.

Key to this capability is extra ultra-high performance HepcoMotion® Herculane wheels that are mounted on adjustable eccentric studs. They run virtually friction-free on the inside of the profile providing stable support for the carriage plate.

You can choose from a number of carriage designs to develop the multi-axis system you need with minimal requirement for brackets and other hardware. We can also supply a stepper motor drive and controller to complete the package. And if you want to take it a stage further we can even integrate it in our proven MCS framework system. Just supply an outline specification and we'll do the rest.

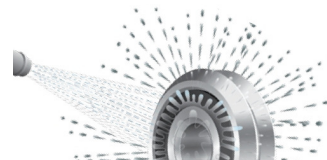
[Click here for more information on PDU2M](#)

[HOME](#)
[LITERATURE](#)
[CONTACT US](#)
[SHOP ONLINE](#)

WASHDOWN WHEELS

Washdown environments can serious damage the longterm health of bearings. The ingress of corrosive fluids and loss of lubrication result in their frequent exchange. Thanks to Bishop Wisecarver's ingenuity however, you can now

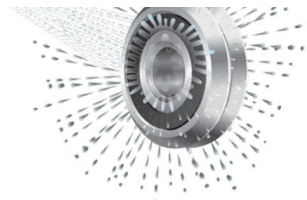
DUALVEE Motion Technology™



extend replacement intervals significantly as their DualVee® washdown wheels will last at least three times longer than a standard version.

So how do they do it? It's a clever combination of an outer metallic shield and inner seal. Under the pressure of water the shield deflects and the soft rubber inner layer compresses against the wheel to protect it. In the absence of water pressure it returns to its original position and residual fluid spins out.

BISHOPWISECARVER®



The wheels are ideal for food and beverage applications as well as any high speed waterjet cutting application. They are available in two sizes and, if you need it, we can also supply stainless steel track.

[Click here to find out more](#)

FORTY YEARS OF SERVICE TO WORLD MANUFACTURING

We are understandably proud to have become one of the world's foremost innovators and manufacturers of linear motion technology in our first 40 years of trading. But we are far from being complacent having achieved that status.

We constantly re-assess our strengths against the changing market demands and that continues to provide HepcoMotion® with the momentum for business growth. Although individual linear motion products remain an important part of the business, the growth in recent years has been in specials and assemblies.

Systems' build now accounts for between 20% and 25% of our output. Almost one fifth of our shop floor space is devoted to assembly. And we have invested heavily in flexible manufacturing to ensure that even last minute changes can be accommodated to our customers' specification.

Our continued success can be attributed to the important tenet – continued investment in processes, product and people. This has resulted in 2008 being another record trading year for us with sales revenue up by a further 10%.

The culture of investment has certainly worked well throughout the first forty years of HepcoMotion® and will continue to underpin our business in the decades to come.



NEW-LOOK WEBSITE

It's clean, it's modern and it's easy to navigate. We've just re-designed our website to ensure you get the information you need as quickly and efficiently as possible. Text is short and to the point and the menu driven options allow you to swiftly explore sections on products, applications and CAD.

Take a look and let us know what you think ... <http://www.hepcotion.com/en/>

**events and
exhibitions**

Go

Tel: +44 (0) 1884 257000
www.HepcoMotion.com
Email: sales@hepcotion.com



HepcoMotion®

Lower Moor Business Park, Tiverton Way, Tiverton, Devon, EX16 6TG
Tel: +44 (0) 1884 257000 Email: sales@hepcotion.com Fax: +44 (0) 1884 243500