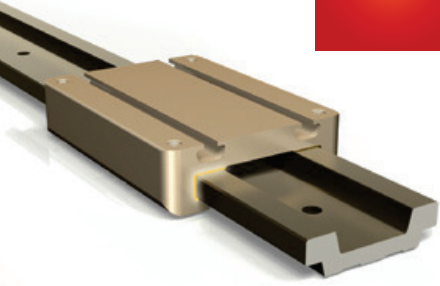


NEW



LOW PROFILE



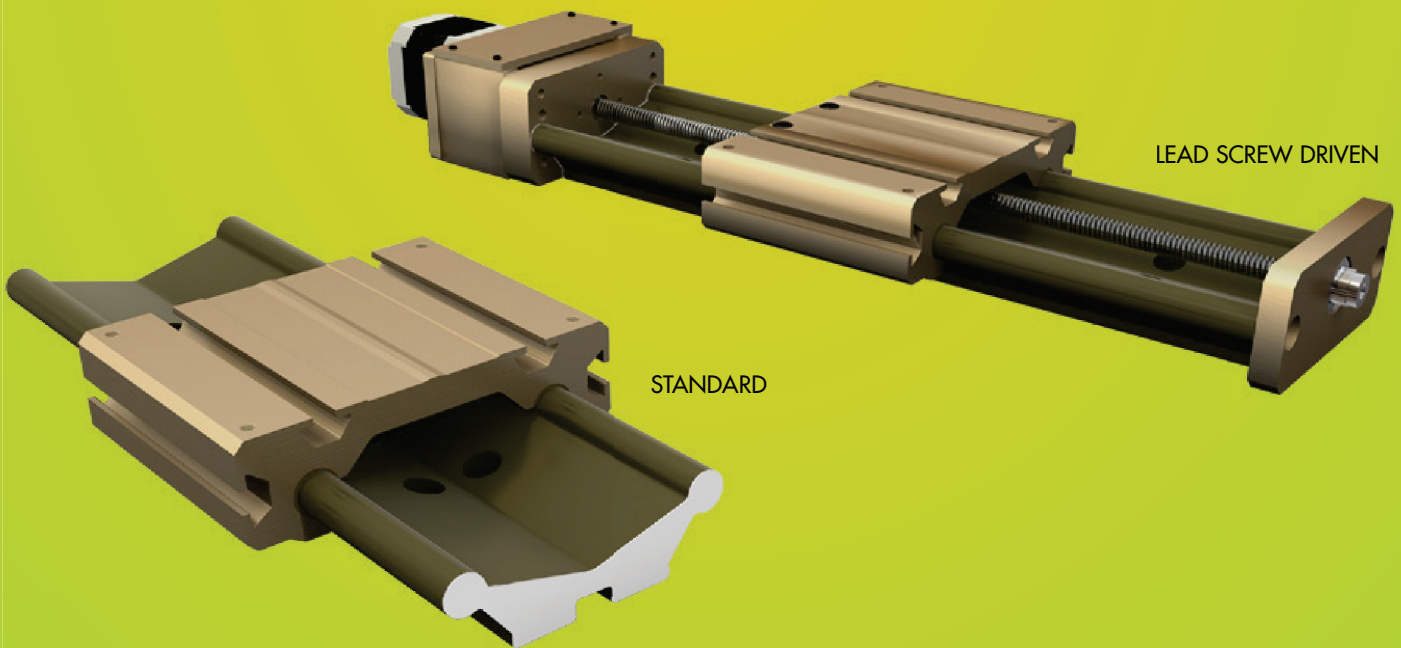
GST

Uni-guide™

PRODUCT OVERVIEW



LEAD-SCREW WITH HAND BRAKE



LEAD SCREW DRIVEN

STANDARD

PBC
LINEAR
A PACIFIC BEARING CO.

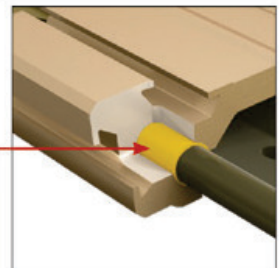
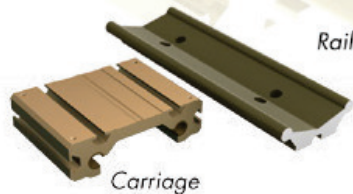
Unlimited design options & versatility.

The Uni-Guide family provides the answer by reducing bulky part count, simplifying assembly and integration and facilitating smooth maintenance-free travel throughout the life of the system. Designed to thrive in the most challenging environments—caustic, dirty, extreme and clean-reliant—the Uni-Guide product family features the design advantages for best-in-class linear motion performance.

Uni-guide™

TWO-PIECE ASSEMBLY

Ceramic coated rail and aluminum alloy carriage assembly facilitates quick and easy integration into new or existing systems.



SELF-LUBRICATING LINER
Uni-Guide's Frelon® liner allows it to excel in the most demanding surroundings: temperature extremes, heavy particulates, wash-down and extreme vibration.

FEATURES

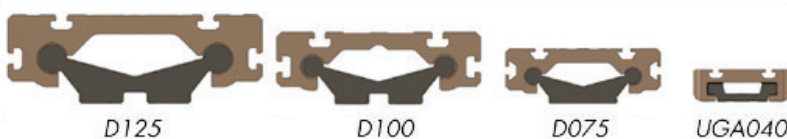
- Driven or non-driven system
- Slide sizes (75mm, 100mm, 125mm)
- Standard length or cut-to-length rails and carriage assemblies
- Continuous lengths up to 10 feet
- Ease of mounting - carriage t-slots and pre-drilled mounting holes
- Easy drop-in unit - no alignment needed
- Drive options - lead or ball screw driven

ACCESSORIES

- NEMA Standard Motor
- Hand brake or crank
- Motor mount attachments

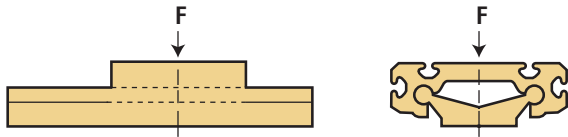


UNI-GUIDE FAMILY OF SIZES

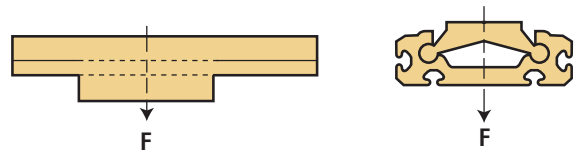


Static Loads - Standard Uni-Guide & Low Profile Uni-Guide

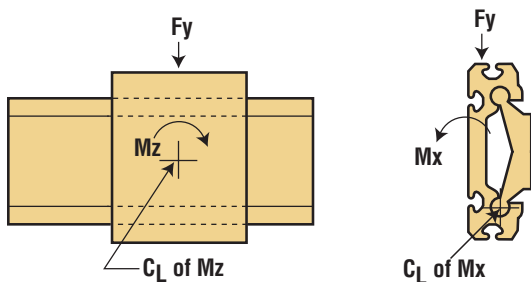
The numbers below are for guides only in a static condition. The drive mechanism selected (lead screw, ball screw, cylinder, etc.) becomes the limiting factor when calculating maximum load and speed capacities. The user is responsible for determining the maximum capacity for the complete system based on the manufacturer's data for their drive configuration.



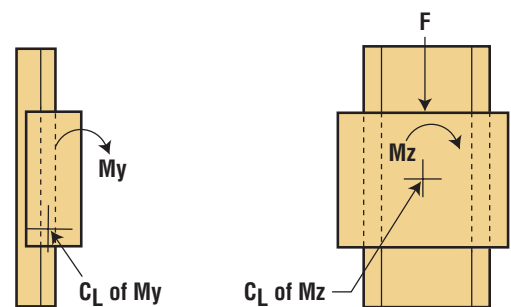
	SIZE	Fz MAX LOAD (lbs.)	Fz MAX LOAD (N)
Standard	D075	500	2,224
	D100	750	3,336
	D125	1,000	4,448
Low Profile	UGA040C-0x1xxx	1,843	8,200
	UGA040C-1x1xxx	1,483	6,600
	UGA040C-2x1xxx	1,101	4,900



	SIZE	Fz (Inverted) MAX LOAD (lbs.)	Fz (Inverted) MAX LOAD (N)
Standard	D075	125	556
	D100	190	845
	D125	250	1,112
Low Profile	UGA040C-0x1xxx	607	2,700
	UGA040C-1x1xxx	607	2,700
	UGA040C-2x1xxx	607	2,700



	SIZE	Fy (lbs.)	Mx (in./lbs.)	Mz (in./lbs.)	Fy (N)	Mx (Nm)	Mz (Nm)
Standard	D075	250	340	350	1,112	38	40
	D100	375	650	730	1,668	73	82
	D125	500	1,200	1,225	2,224	136	138
Low Profile	UGA040C-0x1xxx	1,101	1,062	1,505	4,900	120	170
	UGA040C-1x1xxx	1,281	1,062	2,567	5,700	120	290
	UGA040C-2x1xxx	1,371	1,062	2,567	6,100	120	290

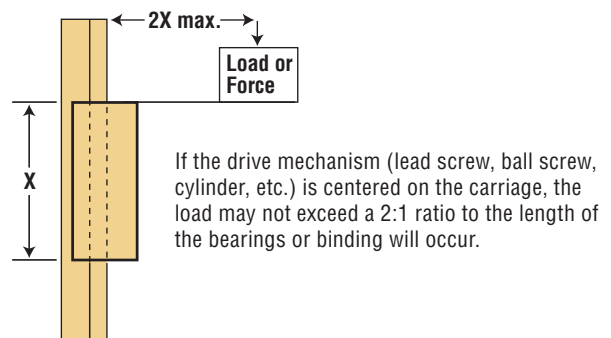


	SIZE	My (in./lbs.)	Mz (in./lbs.)	My (Nm)	Mz (Nm)
Standard	D075	340	350	38	40
	D100	650	730	73	82
	D125	1,200	1,225	136	138
Low Profile	UGA040C-0x1xxx	1,505	1,505	170	170
	UGA040C-1x1xxx	2,567	2,567	290	290
	UGA040C-2x1xxx	2,567	2,567	290	290

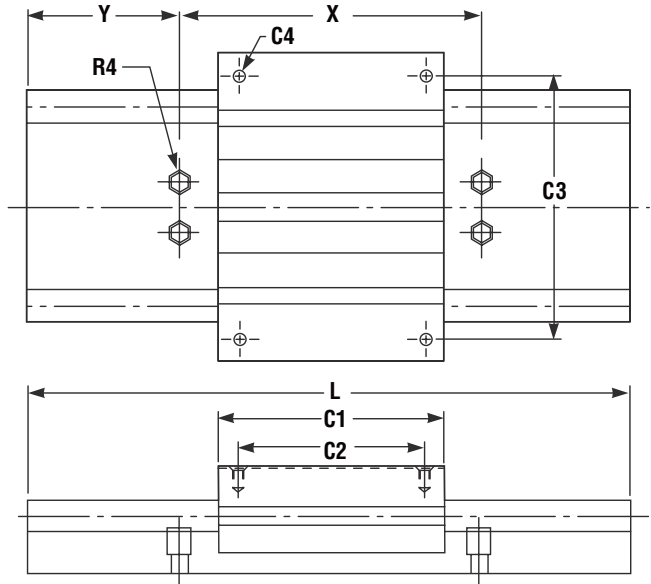
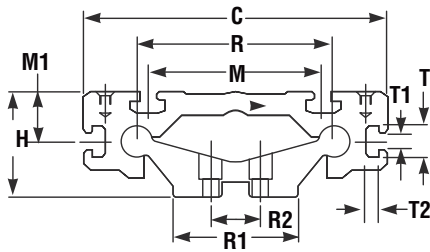
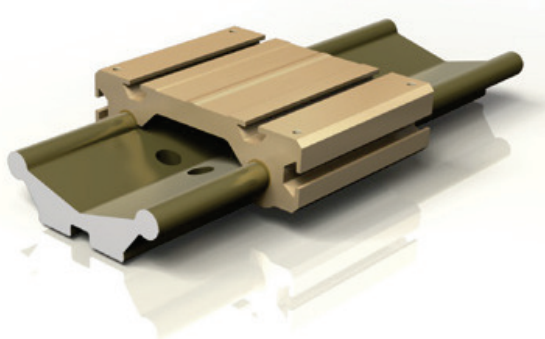
Designs must also operate within the following dynamic parameters:

- Maximum Loads (P) = from charts above
- Maximum Speed Dry (V) = 300 ft./min. (1.524 m/s)
- Maximum PV (pressure x velocity) = 20,000 (0.70 N/mm² x m/s)
- PV Example: Load = 85 psi
Speed = 180 ft./min.
PV = 85 x 180 = 15,300 PV

Note: Frelon GOLD® bearing material coefficient of friction is 0.125.



Standard No Drive Mechanism



STANDARD INCH SERIES WITH NO DRIVE MECHANISM (inches)

PART NUMBER	R	R1	R2	X	R4		Y	H	C	C1		C2		C3	C4		M	M1	L MAX-FEET
					BOLT SIZE					STANDARD	STANDARD	EXTENDED	EXTENDED		BOLT SIZE				
D075-xxx	2.95	2	0.75	4	1/4	2	1.625	4.6	3.5	3	4.5	4	4	10-32	2.6	.819	12		
D100-xxx	3.94	2.6	1	6	5/16	3	2.125	6.1	4.5	3.75	6	5.25	5.25	1/4-20	3.5	1.02			
D125-xxx	4.92	3.3	1.25		3/8	3	2.625	7.6	6	5.25	7.5	6.75	6.75	5/16-18	4.33	1.30			

CARRIAGE TYPES

PART NO.	DRILL	DEPTH	TAP	DEPTH
D075-xxx	.159	.534	10-32	.440
D100-xxx	.201	.750	1/4-20	.500
D125-xxx	.257		5/16-18	.625

T-SLOT INFORMATION (inches)

PART NO.	T	T1	T2
D075-xxx	.590	.256	.236
D100-xxx	.661	.319	.268
D125-xxx			

STANDARD LENGTHS CHART (inches)

PART NO.	8"	12"	16"	18"	20"	24"	28"	30"	32"	36"	40"	42"	48"
D075-xxx	X		X		X		X		X		X		X
D100-xxx		X		X		X		X		X		X	X
D125-xxx			X		X		X		X		X		X

WEIGHTS

PART NO.	RAIL PER INCH	STANDARD CARRIAGE	EXTENDED CARRIAGE
	(lbs.)	(lbs.)	(lbs.)
D075-xxx	0.19	0.98	1.26
D100-xxx	0.32	2.12	2.82
D125-xxx	0.48	4.56	5.7