



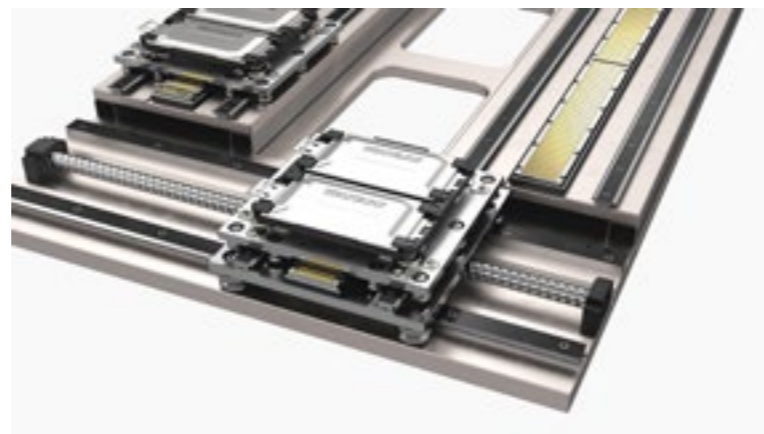
Precision in Power

Linear Guides & Track Systems for Battery Production

WHY CHOOSE HEPACO FOR YOUR BATTERY MANUFACTURING APPLICATION?



With over 50 years experience, HepcoMotion has gained a reputation for it's high quality, low maintenance products and is relied on worldwide by some of the biggest companies in the EV battery market and battery industry alike.



SUNWODA ENERGY



SK on



SVOLT

BYD

CATL

SAMSUNG SAMSUNG SDI

Envision AESC

LG Energy Solution

OUR PRODUCT FEATURES MEET YOUR INDUSTRY-SPECIFIC NEEDS



High Speed for High Throughput

To meet high throughput demands, rapid process transitions are crucial. Hepco's V guide systems excel at high accelerations, making them ideal for high-speed applications, achieving speeds of up to 10m/s.

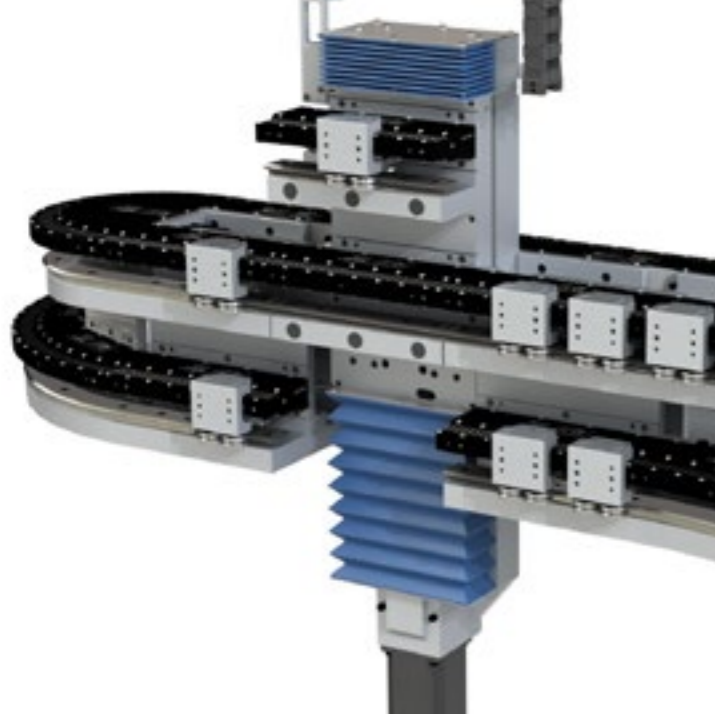
Engineered Precision

Hepco's V guide products are engineered to meet the stringent demands of battery assembly and manufacture, ensuring components align flawlessly. This precision minimises product errors, whilst increasing quality and maximising yield.



Long and Complex

Battery manufacturing can involve complex, long production lines. Hepco's V guide systems provide a versatile selection of straight and curved tracks, allowing effortless integration for limitless configurations.



Flexible

Flexibility is key to facilitate complex production lines involving elements like track switching and offline workstations. That's why our GFX TMS facilitates seamless transitions between systems, enabling diverse connected travel paths and buffering.

Low Maintenance; Higher Throughput

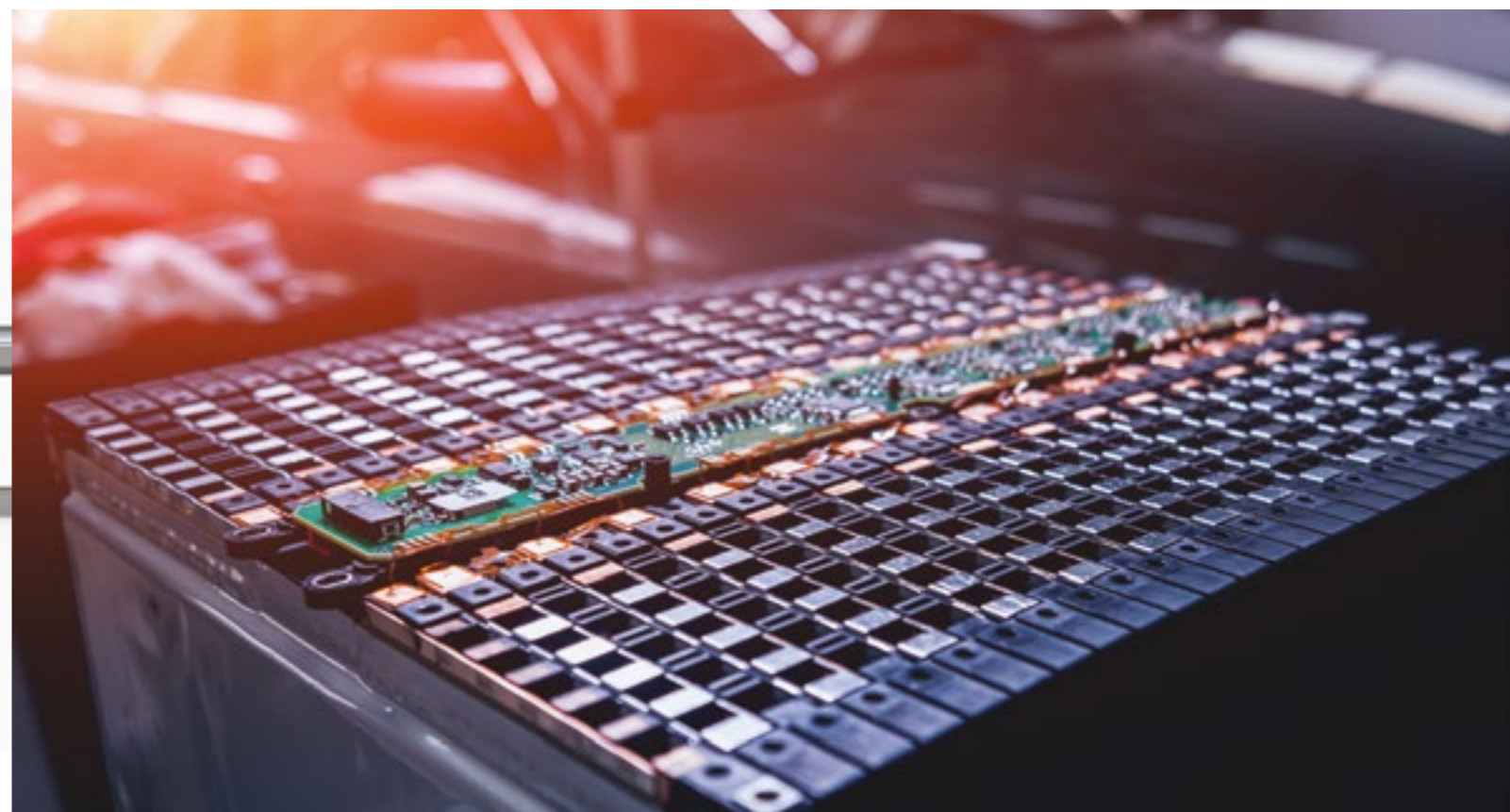
Time is money, and in battery manufacturing, every second counts. Hepco's low friction, self-cleaning and adjustable eccentric bearings keep maintenance to a minimum.

Long System Life

V guide technology guarantees a long service life for bearings as they can easily be readjusted if a small amount of track wear occurs. Moreover, a V guide system will not catastrophically fail, avoiding excessive downtime and a complete system change.

Traverse Gaps

Battery production lines often use complex systems with multiple track switching. The ability of movers to bridge gaps in the track system is therefore key. No problem for the Hepco V guide system, where additional V bearings can be added to ensure a rigid and stable transit, regardless of gap width.



Compliant For Ease of Installation

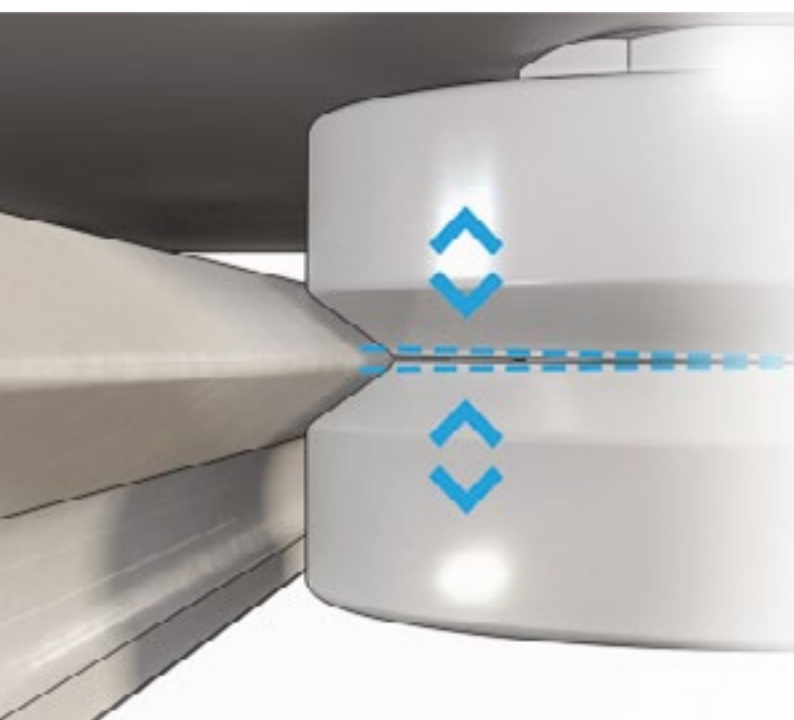
Mounting long systems can often be costly and time-consuming, particularly when track systems in this industry typically span in excess of 100m. Hepco's V guide technology accommodates mounting surface inaccuracies for easy installation, saving both time and money.

Corrosion Resistance

Corrosion can be a challenge in battery manufacturing due to the presence of chemicals and electrolytes. Hepco has this covered with its corrosion resistant, stainless steel SL2 linear guide. Stainless steel versions of many of Hepco's products are also available, along with vacuum and extreme temperature bearings, catering for all needs.

Cost-Effective Solutions

In today's competitive market, cost-effective solutions are a must. Hepco products not only deliver exceptional performance but also reduce maintenance requirements and offer extended lifespans, translating to substantial cost savings.



A PRODUCT SOLUTION FOR EVERY APPLICATION

Linear Products



GV3 Linear Guide System



SL2 Linear Guide System



HDS2 Heavy Duty Linear Guide System

- A wide range of linear motion systems to meet practically any need
- Unlimited lengths available
- Caters for loads up to 136kN and speeds up to 10m/s
- Available in a range of sizes and materials, including stainless steel for corrosion resistance
- A choice of drive options
- Products are available as assembled systems or as individual components

Ring and Track Systems



PRT2 Ring Guide System



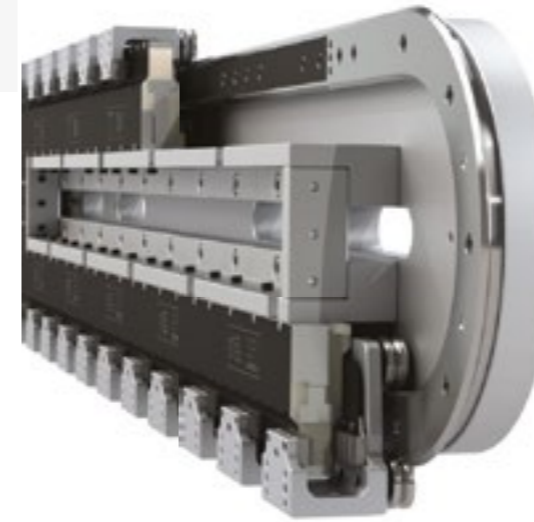
PRT2 Precision Track Systems



DTS & DTS+ Track Systems

- Ring guides, segments and track systems offer unlimited diameters, sizes and high load bearing capacity (with HDRT)
- Many sizes and layouts of track system are possible, including oval, square, rectangular, S bend, U shape, J shape, and many other shape configurations as required
- Additional equipment such as tooling, routing cabling or other services can be housed inside the system, saving valuable floor space
- Drive options include a belt, chain, or custom rack and pinion drives

GFX Guidance System for Beckhoff XTS



HepcoMotion's GFX system is a precision engineered track system that provides the transport path for higher duty XTS applications. The Beckhoff XTS drive allows movers to be controlled individually; as a result, work processes of different duration can be combined, product and process changes are possible and workstations can be added or removed as needed. Together they offer incredible flexibility in terms of motion profile and application design.

There are a number of GFX versions to cater for all needs: Hi-Drive for heavier applications, Agile for lighter loads, Hygienic for operation in wet environments, and Track Management System for track switching.



GFX r



TMS

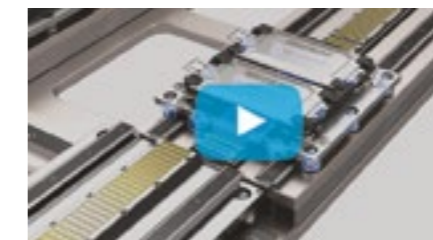


GFX Agile

Related Videos



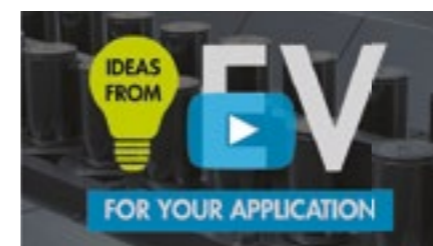
DTS Automotive Battery Assembly



Automated Electric Vehicle Battery Manufacturing



HDS2 | Electric Vehicle Charging Station



The Electric Vehicle Industry Ideas For Your Application



Track Management System GFX & XTS Latest Developments



GFX Battery Assembly Unit

If you are viewing this content offline, use this QR code to access the digital catalogue to interact with this document:



HepcoMotion®
Lower Moor Business Park
Tiverton Way Tiverton
Devon England EX16 6TG

Tel: +44 (0)1884 257000
E-mail: sales@hepcotion.com

Power in Precision Leaflet UK 01
© 2023 Hepco Slide Systems Limited
All rights reserved by Hepco Slide Systems Limited, Tiverton, Devon EX16 6TG
Reproduction in whole or part without prior authorisation from Hepco is prohibited
HepcoMotion® is the trading name of Hepco Slide Systems Limited